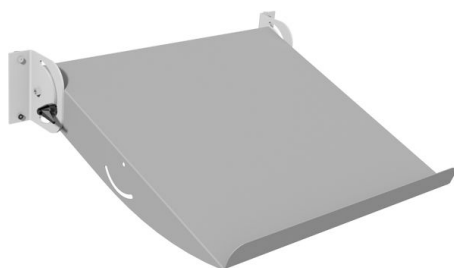

Tilting top shelf

Reference : 254



Description :

Top shelf P 400 mm tilting, can be mounted on a multi-function rail.

Benefits :

- Quick, simple and easy to attach to multi-function rail.
- Easily tilts upwards thanks to the clamping nuts.
- Solid and robust P 400 mm steel shelf.
- Available in several widths from 398 to 1500 mm.

Technical specifications :

Product Name	Tilting top shelf
SKU	254
Weight (kg)	1.000000
Application	Accessoires poste de travail
