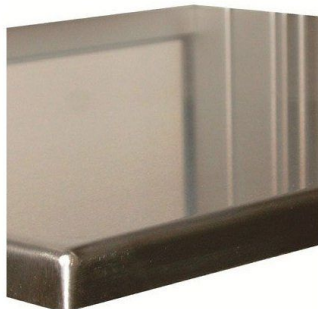


---

## Polished stainless steel top



*Reference : 396*

---

### Description :

Polished stainless steel top

---

### Benefits :

- Available in several widths from 800 to 2000 mm.
- Ideal for your production workshops in humid or difficult environments requiring hygiene standards.
- Softer, rounded corners provide better safety.
- The polished stainless steel tray ensures quick and easy cleaning.

---

### Technical specifications :

Product Name	Polished stainless steel top
SKU	396
Weight (kg)	1.000000
Application	Accessoires poste de travail, INOX, Laboratoires